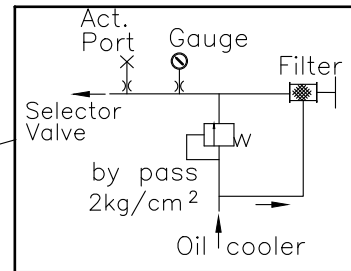


OIL INLET AND AIR BREATHER

(INLET OR OUTLET OF COOLING WATER)-ø26.0

LEVER



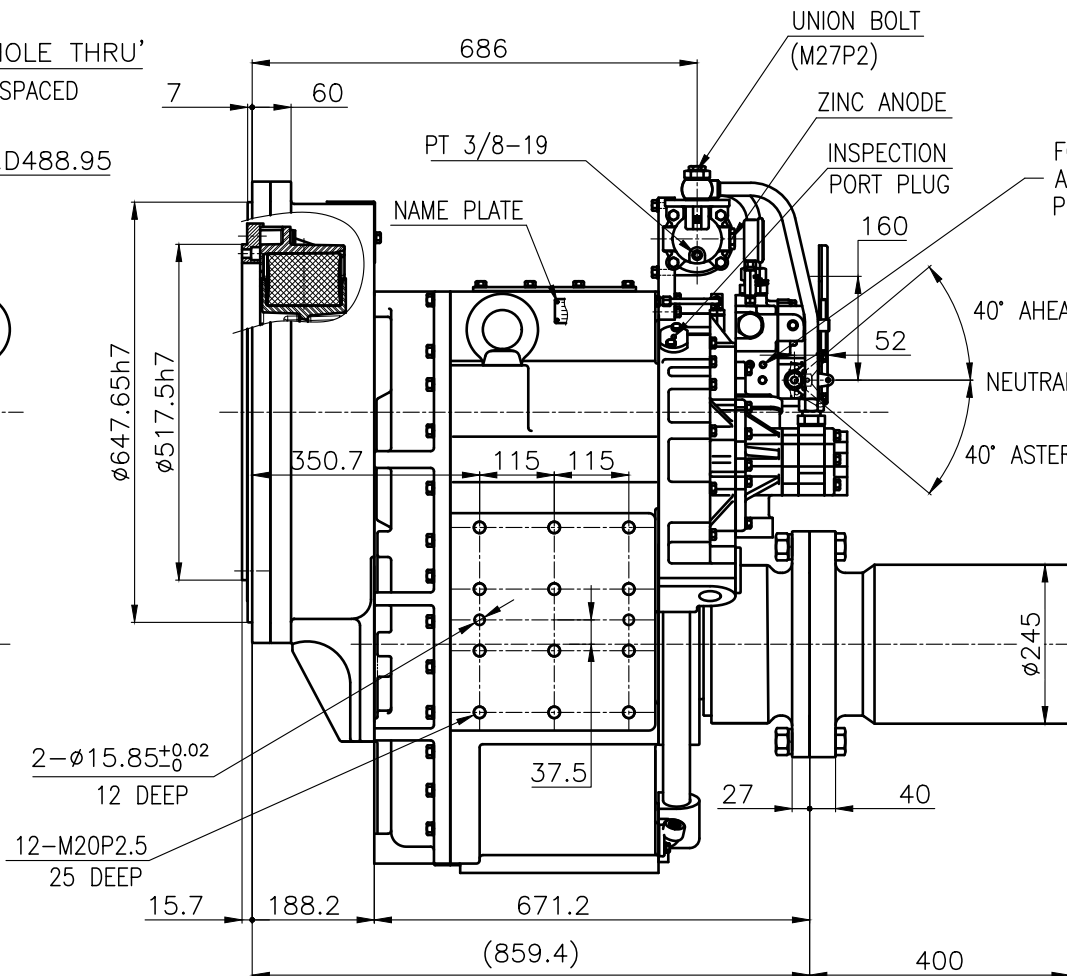
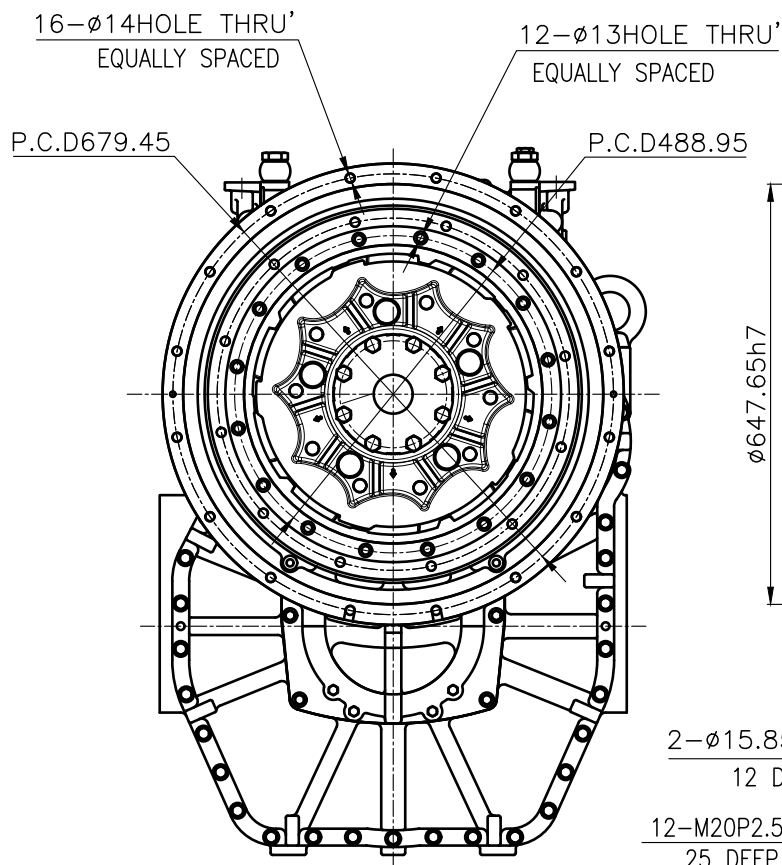
[BY PASS SYSTEM]

Lower Lubrication Pressure Check Port (PT 1/8-28)

4-M12P1.75
20 DEEP

| DMT600DL MARINE TRSANMISSION SPECIFICATION | | | |
|--|--------|---|--------------|
| GEAR RATIO | | 2.53, 3.02, 3.28, 3.56, 4.07, 4.48, 4.95 | |
| TOTAL WEIGHT | | APPROX. 1407 Kg (DRY, EXCEPT FOR PROPELLER COUPLING) | |
| OIL CAPACITY | | APPROX. 22 L | |
| OIL VISCOSITY | | SAE # 30 | |
| OIL PRESSURE | | 2.16 ~ 2.55 MPa | CLUTCH OIL |
| DIRECTION OF ROTATION IN FORWARD | INPUT | C.C.W VIEWED FROM THE STERN | |
| | OUTPUT | C.W VIEWED FROM THE STERN | |
| OIL CHANGE INTERVAL | | THE FIRST 100HOURS OF INITIAL OPERATION | |
| | | AND EVERY 1000HOURS THEREAFTER | |
| SHIFTING LIMIT | | UNDER 50% OF THE RATED ENGINE SPEED | |
| OIL COOLER | | WATER FLOW 90 ~ 120 L/m | |
| | | TEMPERATURE OF COOLING WATER | MAX 32°C |
| OPERATING TORQUE OF SHIFTING LEVER | | | UNDER 2.94Nm |

OUTPUT SHAFT COUPLING & PROPELLER COUPLING DIMENSION



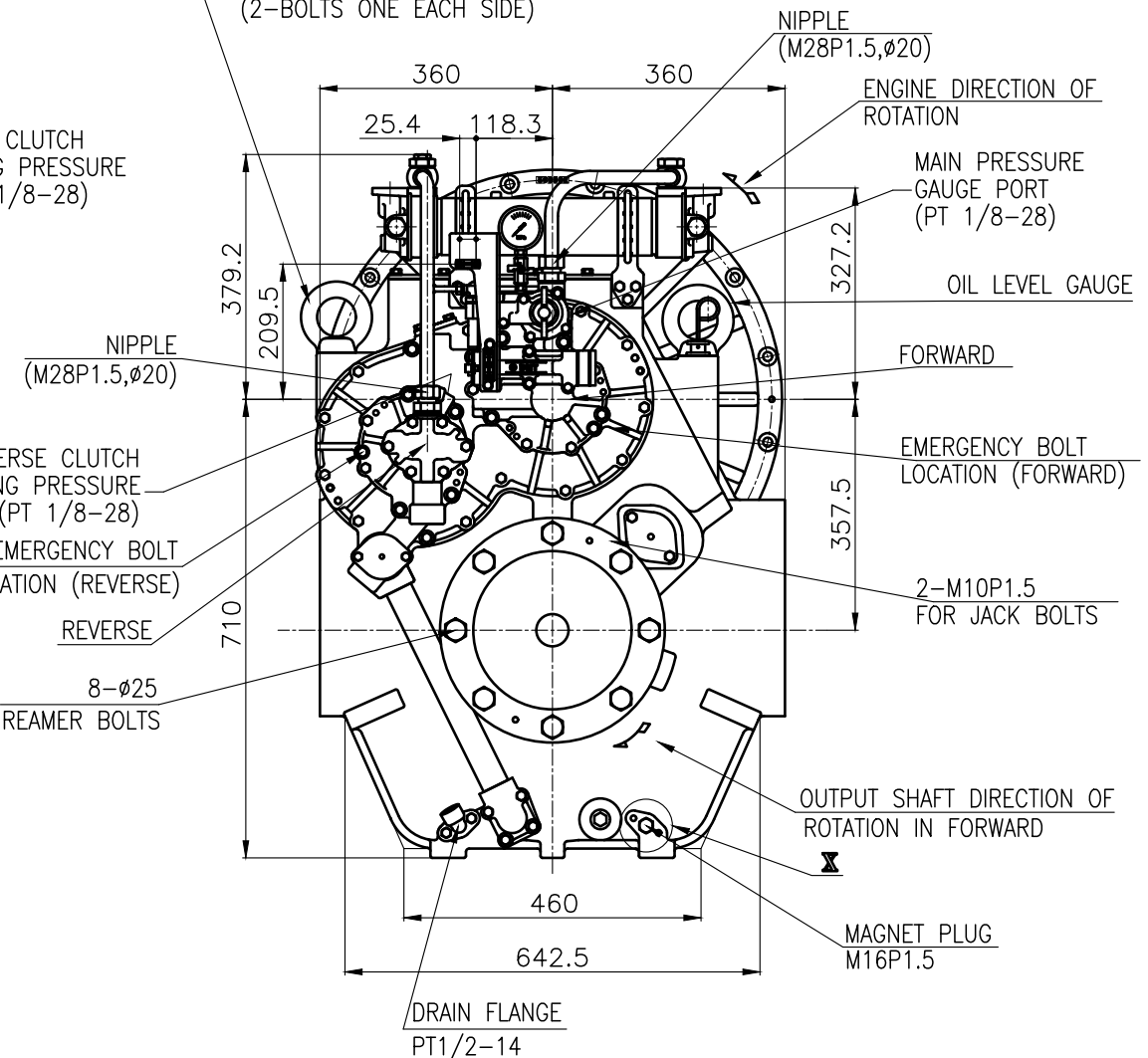
FORWARD CLUTCH ACTUATING PRESSURE PORT(PT 1/8-28)

REVERSE CLUTCH ACTUATING PRESSURE PORT(PT 1/8-28)

EMERGENCY BOLT LOCATION (REVERSE)
REVERSE

8-ø25 REAMER BOLTS

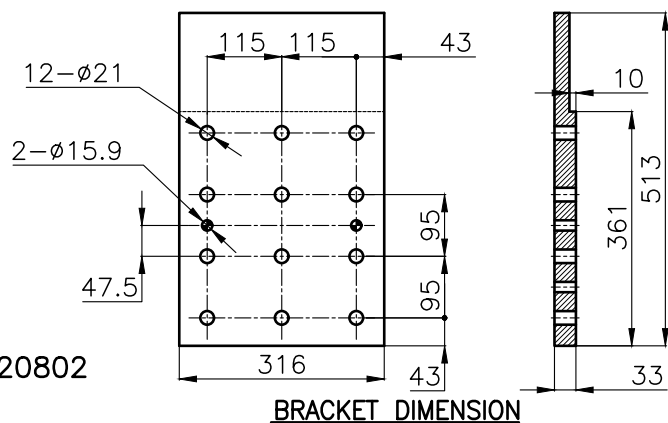
EYEBOLT FOR LIFTING MARINE TRANSMISSION (2-BOLTS ONE EACH SIDE)



REMARK

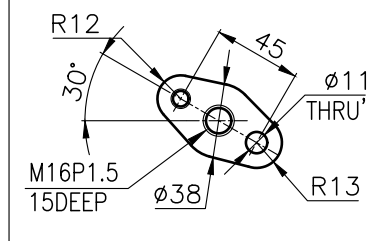
- 1.HOUSING : SAE# 0
- 2.DRIVING RING : SAE 16"
- 3.COUPLING TYPE

CENTA FLEX COUPLING: 77520802
DUMMY: 550951, 77520890



BRACKET DIMENSION

"X" DETAIL(3/1)



| 公差 TOLERANCE ON | | | | 번호 NO. | 품 PART NO. | 품 PART NAME | 개 수 Q'TY | 재 MATERIAL | 규 SIZE | 비 REMARKS |
|-----------------|-------------|-----------|--------|-----------------|--------------------|------------------------|----------|---------------------|-------------------------|----------------------|
| 분수 FRACTIONS | 소수 DECIMALS | 각도 ANGLES | | 재 MATERIAL | 작성 DATE 2017.11.03 | 척 도 SCALE 1/1 | 형 식 TYPE | DMT600DL | 원 도 번 ORIGINAL DWG. NO. | |
| ± | ± | ± | | 승 인 APPROVED BY | 검 도 CHECKED BY | 제 도 설 계 DRAWN DESIGNED | 품 명 NAME | MARINE TRANSMISSION | 도 번 DWG. NO. | 개 정 (REV.) 000 |
| 구 분 | 조 급 | 중 급 | 정 급 | KC.Yoon | | | | 도 DWG. NO. | W60000GHA~G-016CFR | |
| 1 조 과 4 이하 | ± 0.3 | ± 0.1 | ± 0.05 | D-I INDUSTRIAL | | | | 크 기 SIZE | A 3 | 코 드 번 호 CODE ID. NO. |
| 4 16 | ± 0.5 | ± 0.2 | ± 0.07 | | | | | | | |
| 16 63 | ± 0.7 | ± 0.3 | ± 0.1 | | | | | | | |
| 63 250 | ± 1.2 | ± 0.5 | ± 0.2 | | | | | | | |
| 250 1000 | ± 2.0 | ± 0.8 | ± 0.3 | | | | | | | |