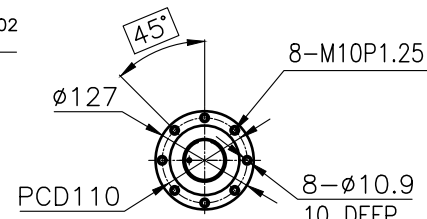
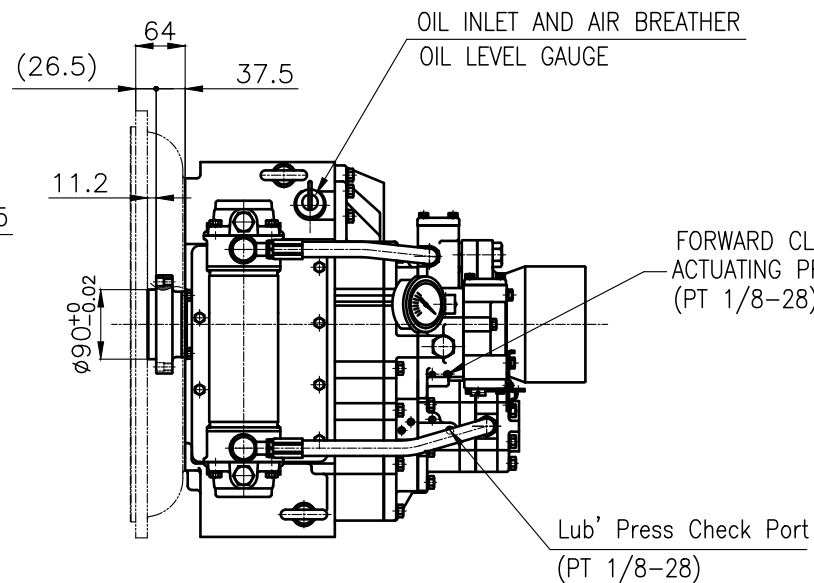


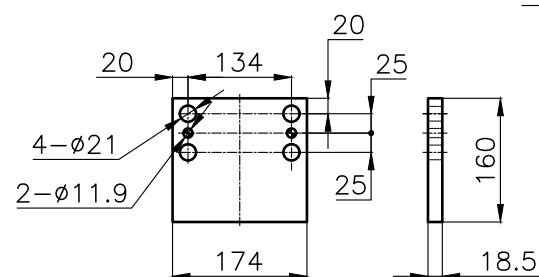
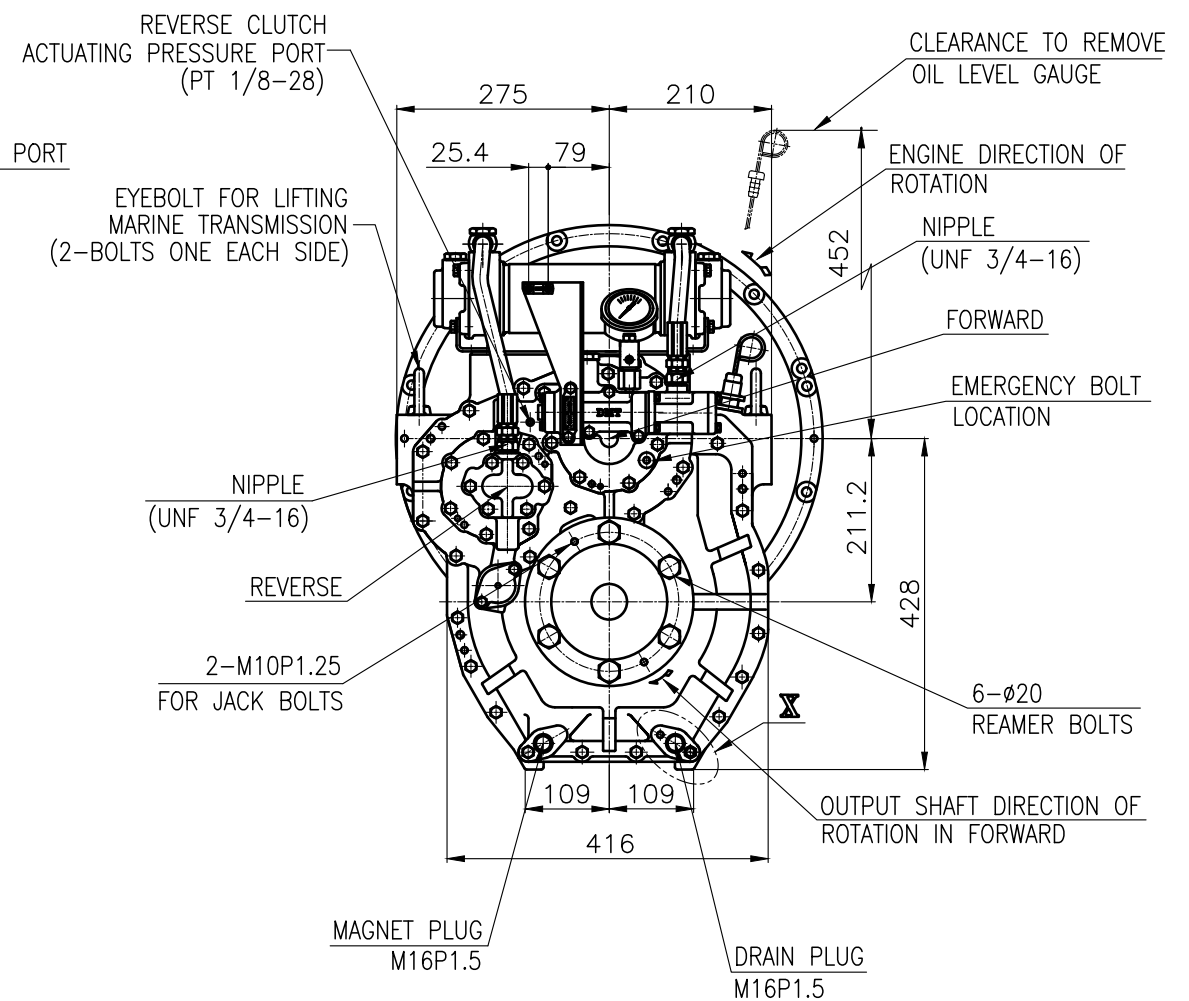
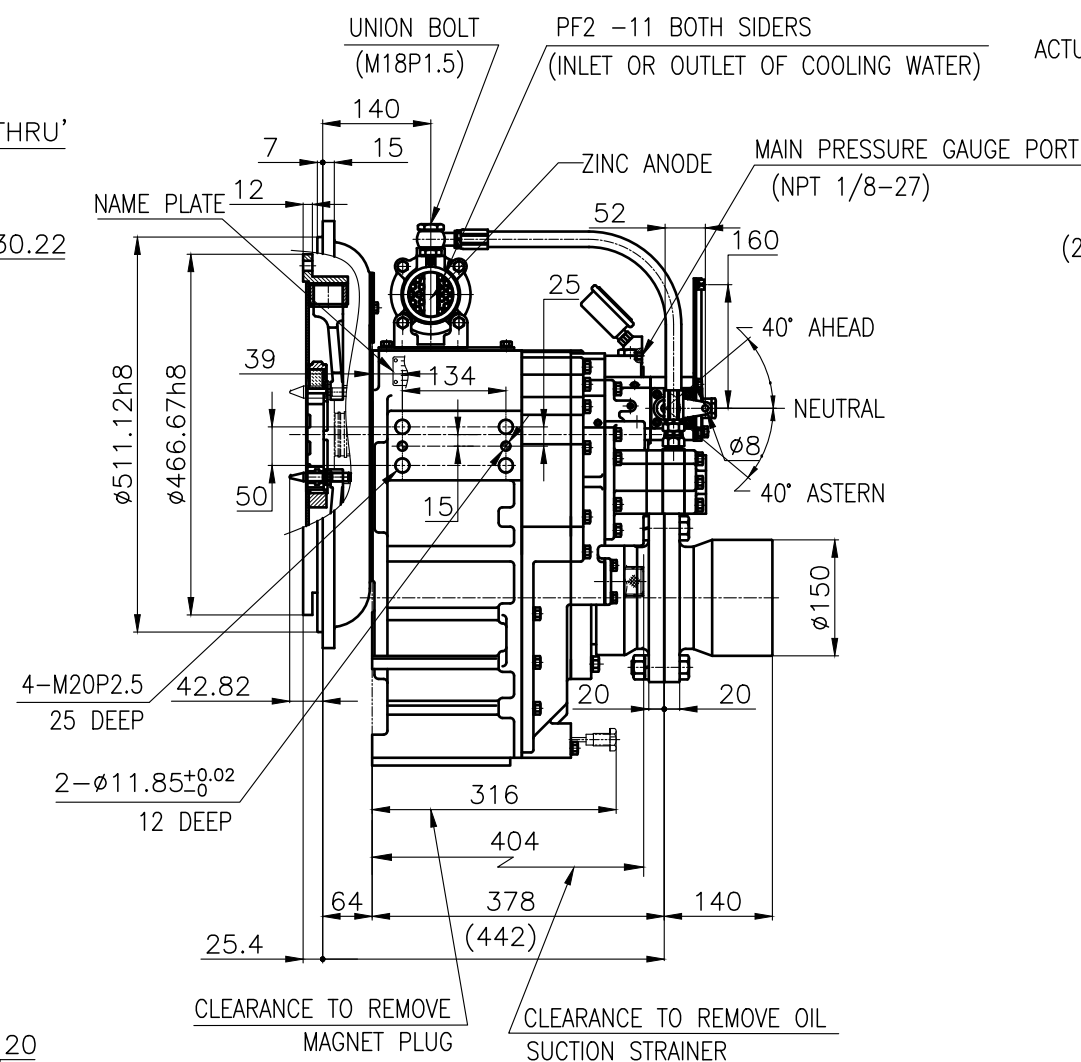
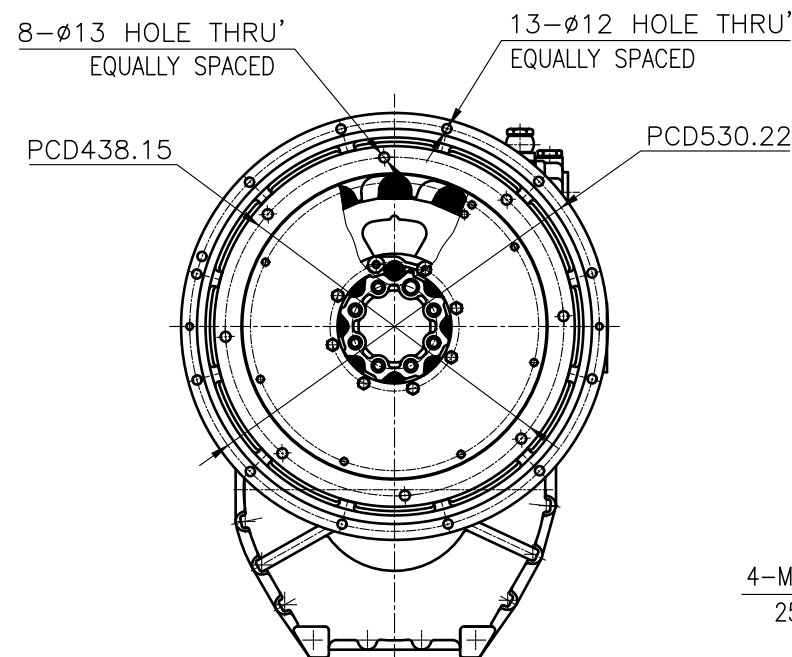
### OUTPUT SHAFT COUPLING & PROPELLER COUPLING DIMENSION



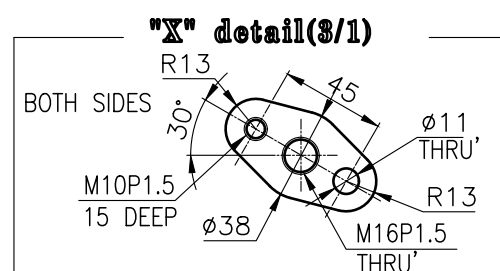
## INPUT COUPLING DIMENSION



DMT 150H MARINE TRANSMISSION SPECIFICATION			
GEAR RATIO	1.83, 2.09, 2.51, 3.08, 3.43		
TOTAL WEIGHT	APPROX. 287 kg(DRY)		
OIL CAPACITY	APPROX. 5.5 L		
OIL VISCOSITY	SAE # 30		
OIL PRESSURE	1.96 ~ 2.54 MPa	CLUTCH OIL	
DIRECTION OF ROTATION IN FORWARD	INPUT	C.C.W VIEWED FROM THE STERN	
	OUTPUT	C.W VIEWED FROM THE STERN	
OIL CHANGE INTERVAL	THE FIRST 100HOURS OF INITIAL OPERATION		
	AND EVERY 1000HOURS THEREAFTER		
SHIFTING LIMIT	UNDER 50% OF THE RATED ENGINE SPEED		
OIL COOLER	WATER FLOW 40 ~ 60L/min		
	TEMPERATURE OF COOLING WATER	MAX 32°C	
OPERATING TORQUE OF SHIFTING LEVER		UNDER 2.94Nm	




BRACKET DIMENSION



REMARK (HOT)

- 1.HOUSING: SAE#1
- 2.DRIVING RING: SAE 14"
- 3.COUPLING TYPE : DUAL STAGE
- 4.APPLICATION ENGINE : STANDARD

공 통 공 차 TOLERANCE ON						번호 NO.	품 PART NO.	품 PART NAME 명		개 수 Q'TY	재 질 MATERIAL	규 격 SIZE	비 고 REMARKS		
분 소 라 FRACTIONS DECIMALS ANGLES ± ± ±						재 질 MATERIAL			형 식 TYPE	DMT150H		원 도 번 ORIGINAL DWG. NO.			
일 반 차 절 차 가 공 구 편 조 공 종 공 정 공 1 초과 4 이하 ± 0.3 ± 0.1 ± 0.05 4 16 ± 0.5 ± 0.2 ± 0.07 16 63 ± 0.7 ± 0.3 ± 0.1 63 250 ± 1.2 ± 0.5 ± 0.2 250 1000 ± 2.0 ± 0.8 ± 0.3							작성 DATE 2016.06.29	척 도 SCALE N/S	품 명 MARINE TRANSMISSION						
						승 인 APPROVED BY	검 도 CHECKED BY	제 도 DRAWN					설 계 DESIGNED		
						JK.Kim	TH.Cha	BJ.Moon	도 번 DWG. NO.	15000GA~E-114DCH		개정(REV.) 000			
						㉔ D-I INDUSTRIAL						크 기 SIZE	A 3	코-드 번 호 CODE ID. NO.	