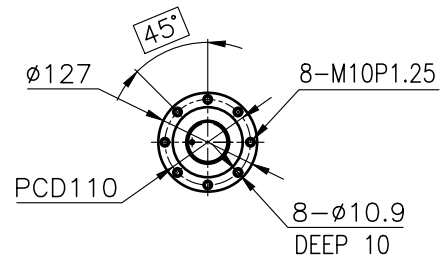
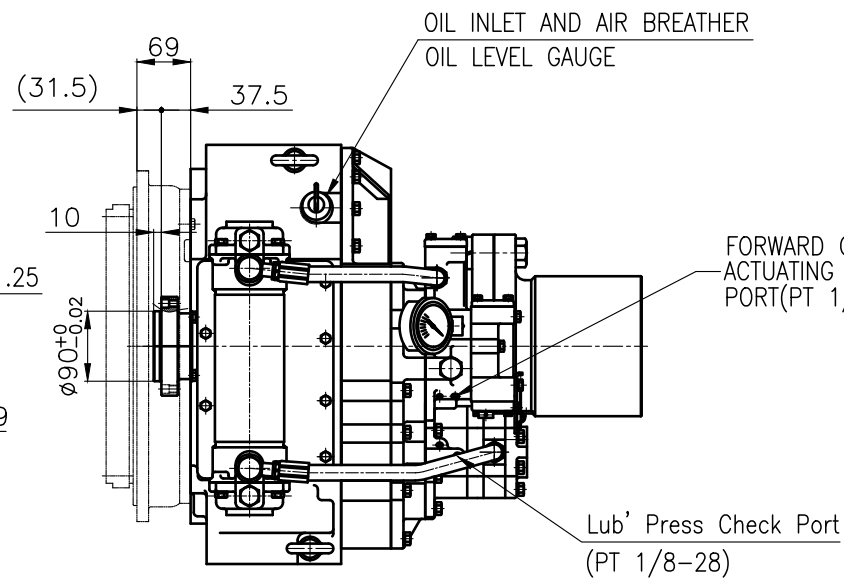


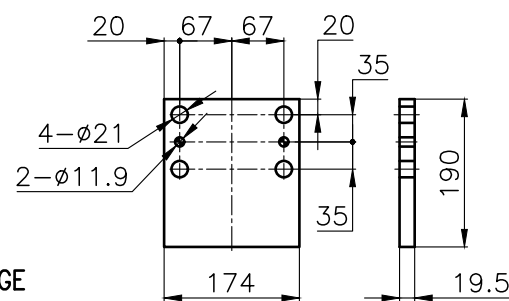
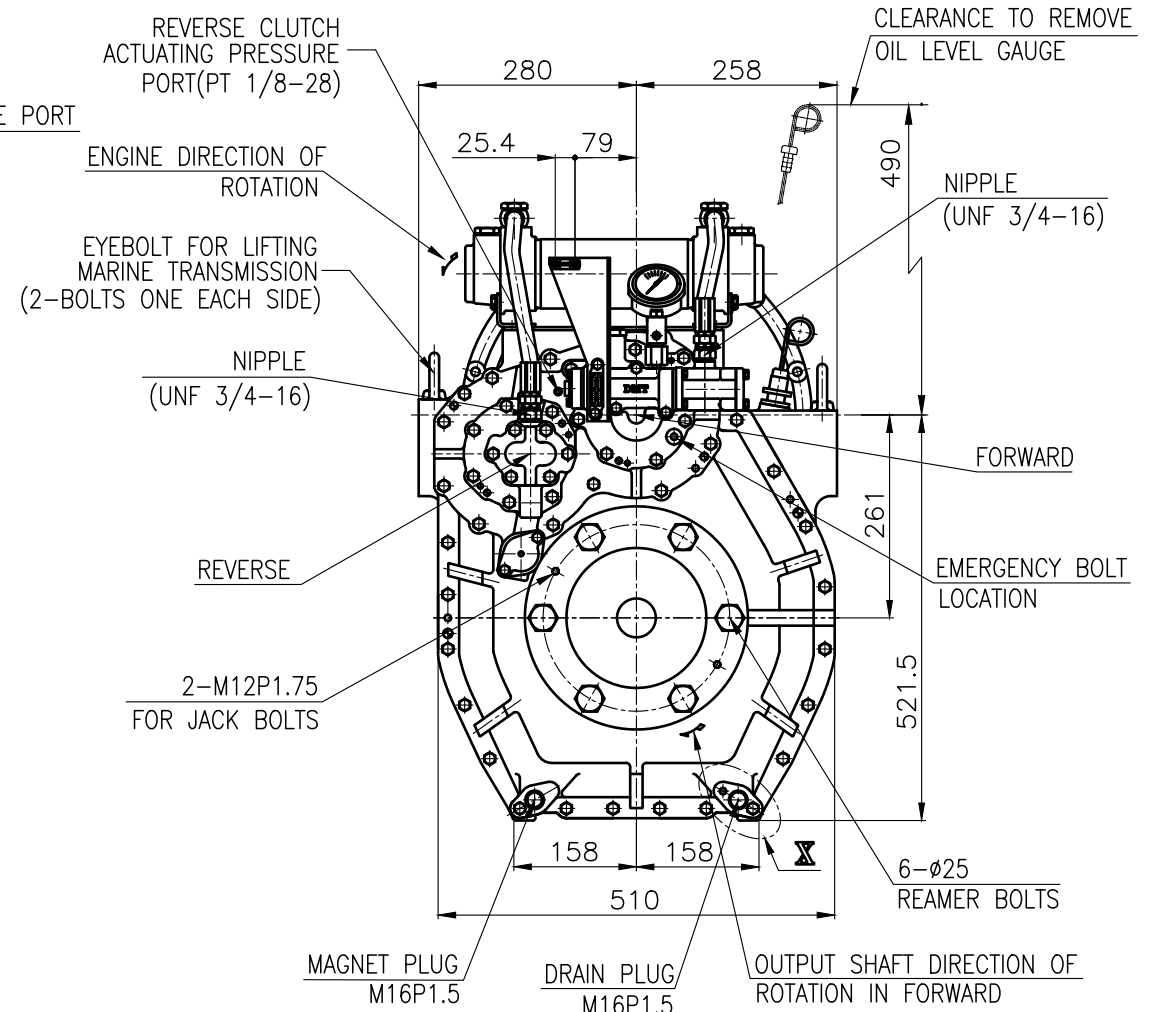
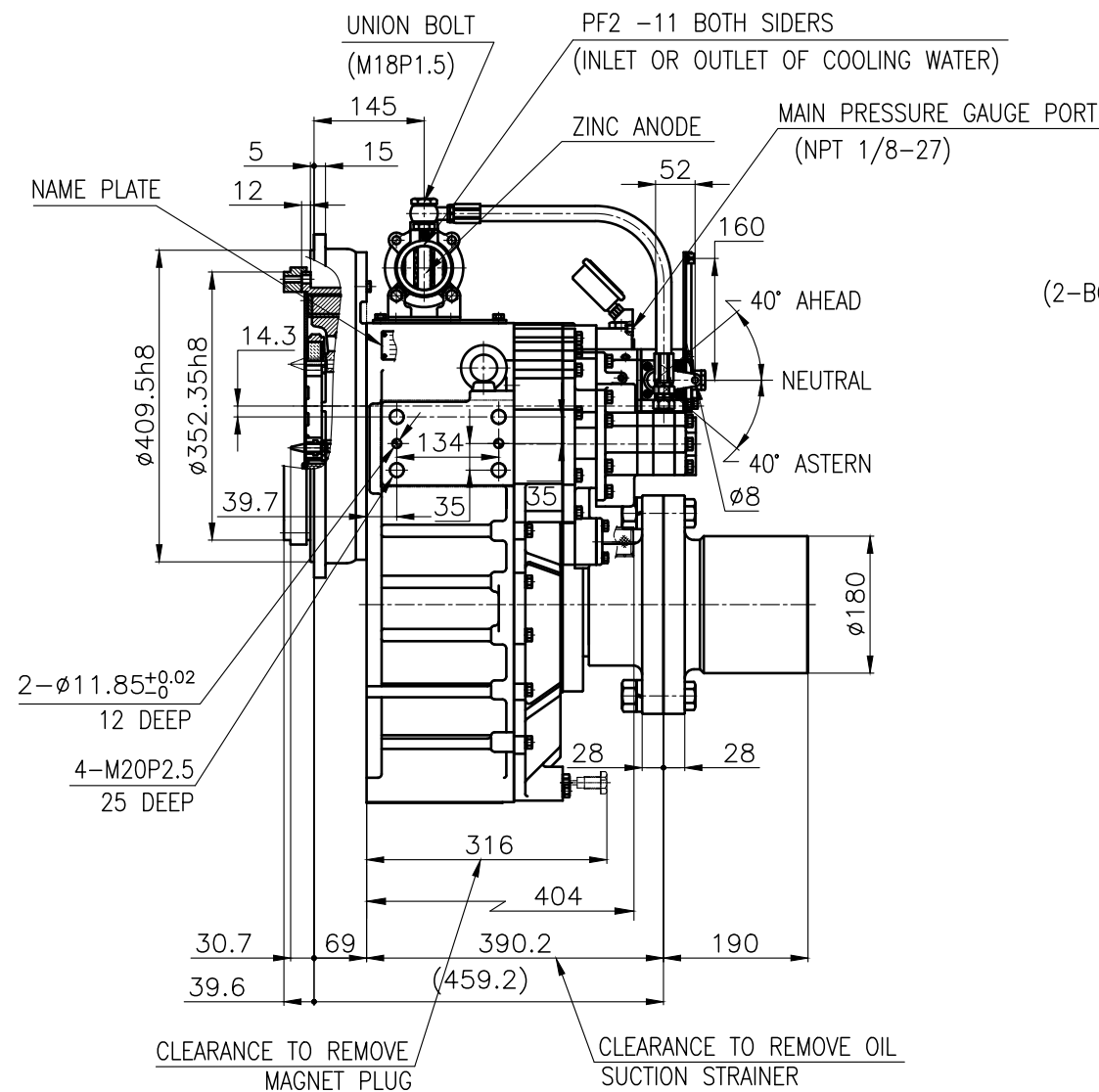
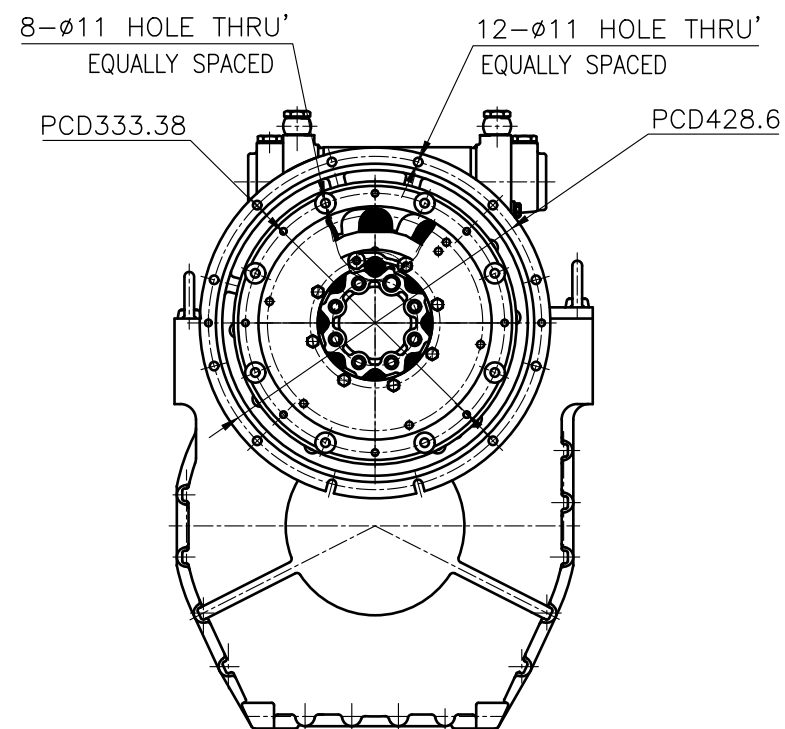
OUTPUT SHAFT COUPLING & PROPELLER COUPLING DIMENSION



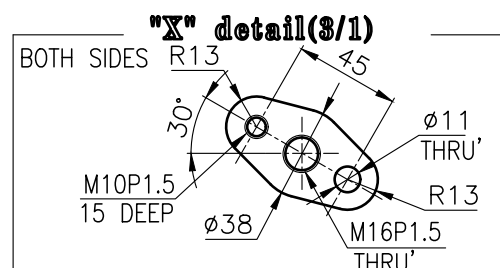
INPUT COUPLING DIMENSION



DMT 170HL MARINE TRANSMISSION SPECIFICATION			
GEAR RATIO	4.04, 4.48		
TOTAL WEIGHT	APPROX. 352.5 kg(DRY)		
OIL CAPACITY	APPROX. 10 L		
OIL VISCOSITY	SAE # 30		
OIL PRESSURE	1.96 ~ 2.54 MPa	CLUTCH OIL	
DIRECTION OF ROTATION IN FORWARD	INPUT	C.C.W VIEWED FROM THE STERN	
	OUTPUT	C.W VIEWED FROM THE STERN	
OIL CHANGE INTERVAL	THE FIRST 100HOURS OF INITIAL OPERATION AND EVERY 1000HOURS THEREAFTER		
SHIFTING LIMIT	UNDER 50% OF THE RATED ENGINE SPEED		
OIL COOLER	WATER FLOW 40 ~ 60L/min		
	TEMPERATURE OF COOLING WATER	MAX 32°C	
OPERATING TORQUE OF SHIFTING LEVER		UNDER 2.94Nm	



BRACKET DIMENSION



REMARK (HOT) 4-
2-
1.HOUSING: SAE#3
2.DRIVING RING: SAE 11.5"
3.COUPLING TYPE : DUAL STAGE
4.APPLICATION ENGINE : STANDARD

원통형 차 TOLERANCE ON					번호 NO.	품번 PART NO.		품명 PART NAME		개수 Q'TY	재질 MATERIAL		규격 SIZE		비고 REMARKS			
분수 FRACTIONS		소수 DECIMALS		각도 ANGLES			작성 DATE 2018.06.29		척도 SCALE N/S		형식 TYPE DMT170HL		원도 번호 ORIGINAL DWG. NO.					
± —		± —		± —														
정밀도							승인 APPROVED BY JK.Kim		검도 CHECKED BY TH.Cha		제도 설계 DRAWN DESIGNED GH.Park		품명 NAME MARINE TRANSMISSION		도면 번호 DWG. NO. 17000GHB~C-3115DCH		개칭 (REV.) 000	
구경																		
1 초과 4 이하 ± 0.3 ± 0.1 ± 0.05																		
4 16 ± 0.5 ± 0.2 ± 0.07																		
16 63 ± 0.7 ± 0.3 ± 0.1																		
63 250 ± 1.2 ± 0.5 ± 0.2																		
250 1000 ± 2.0 ± 0.8 ± 0.3																		
D-I INDUSTRIAL											크기 SIZE A 3		코드 번호 CODE ID. NO.					