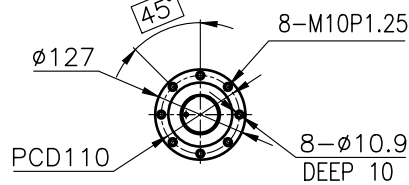
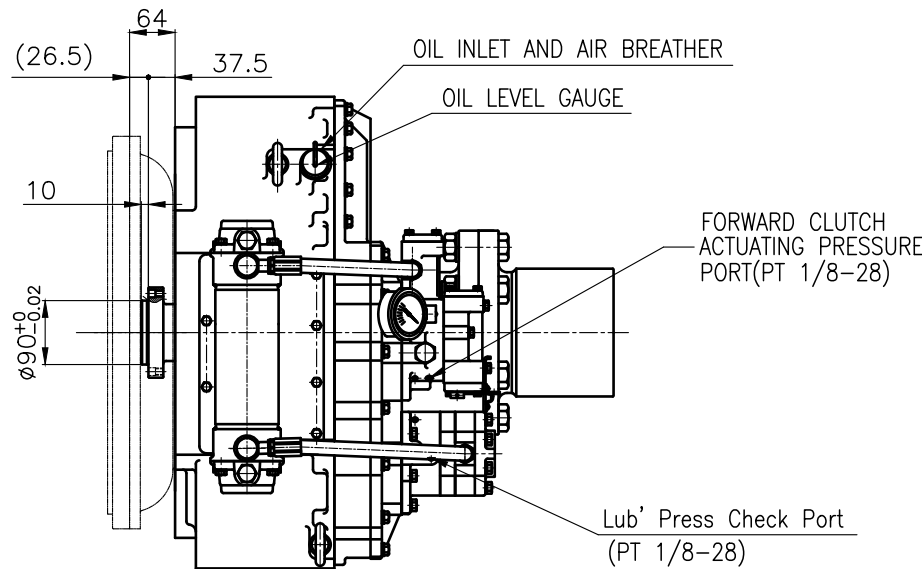


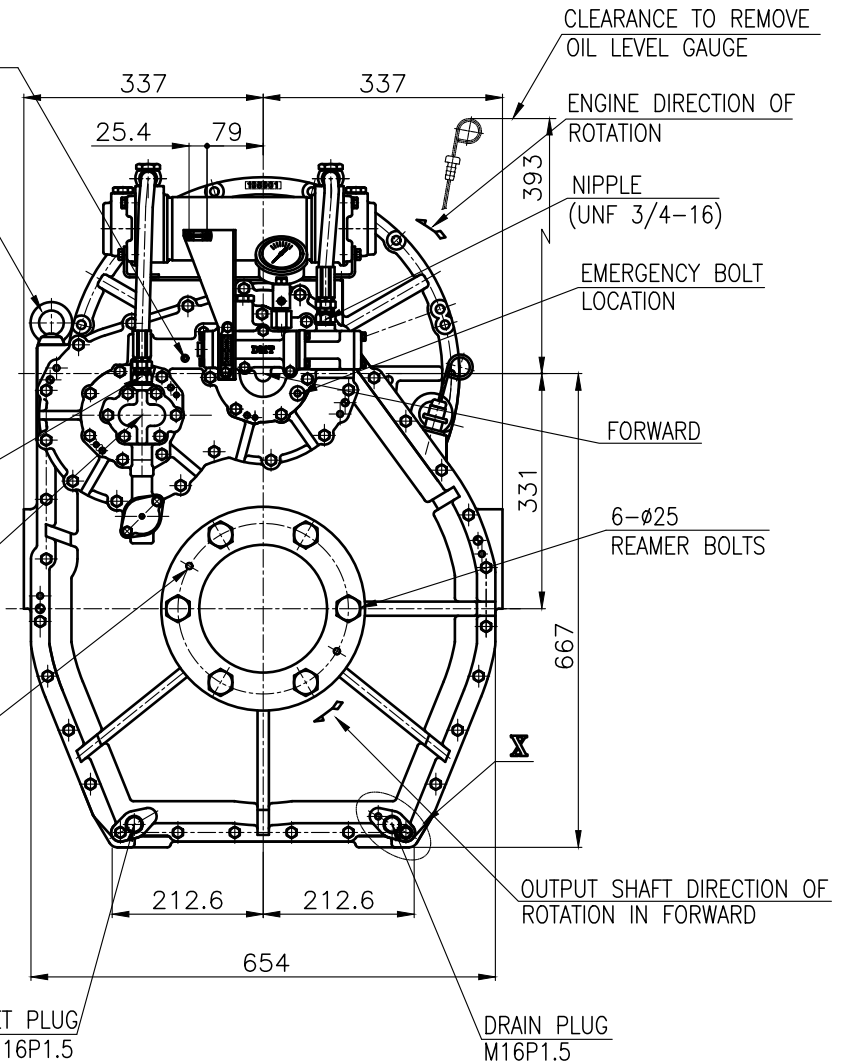
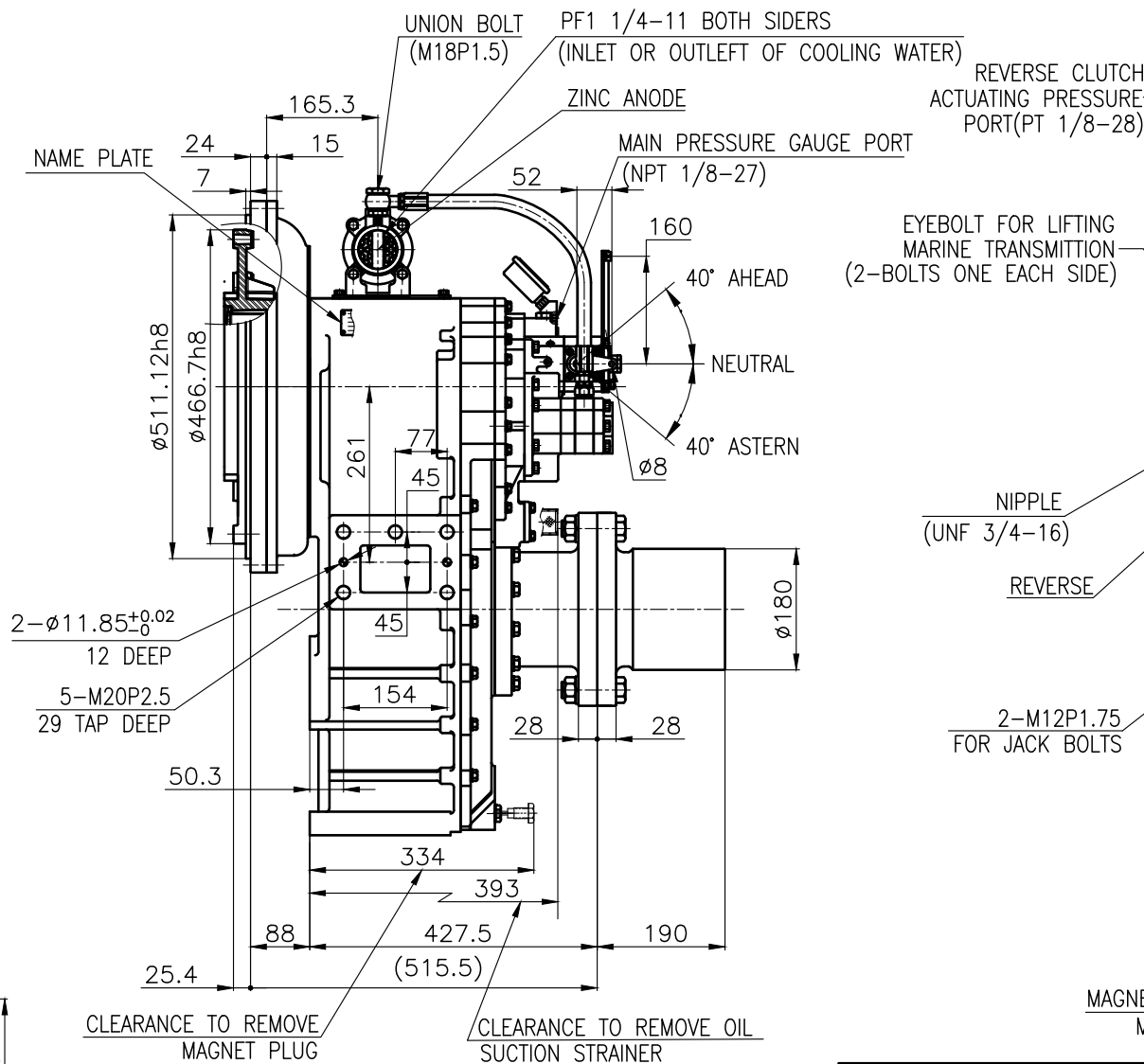
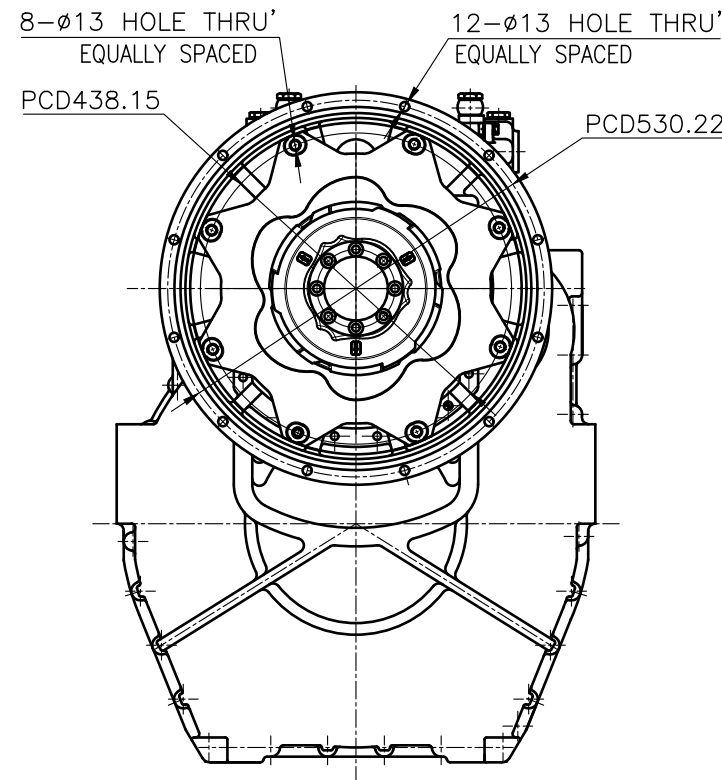
OUTPUT SHAFT COUPLING &
PROPELLER COUPLING DIMENSION



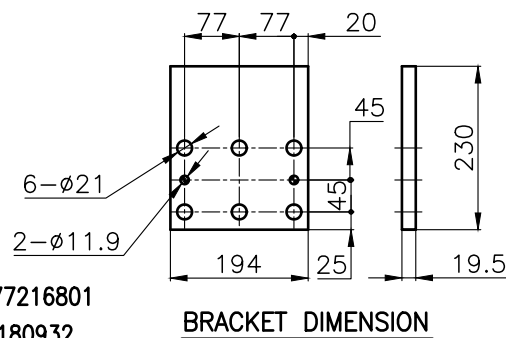
INPUT COUPLING
DIMENSION



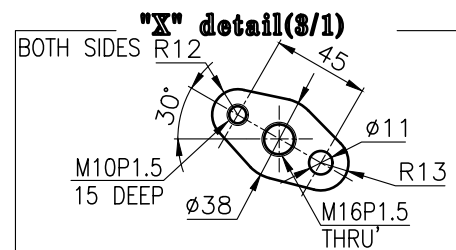
DMT180HL MARINE TRANSMISSION SPECIFICATION			
GEAR RATIO	5.15, 5.96		
TOTAL WEIGHT	APPROX. 475 Kg(DRY)		
OIL CAPACITY	APPROX. 18 L		
OIL VISCOSITY	SAE # 30		
OIL PRESSURE	1.96 ~ 2.54 MPa		CLUTCH OIL
DIRECTION OF ROTATION IN FORWARD	INPUT	C.C.W VIEWED FROM THE STERN	
	OUTPUT	C.W VIEWED FROM THE STERN	
OIL CHANGE INTERVAL	THE FIRST 100HOURS OF INITIAL OPERATION AND EVERY 1000HOURS THEREAFTER		
SHIFTING LIMIT	UNDER 50% OF THE RATED ENGINE SPEED		
OIL COOLER	WATER FLOW 40 ~ 60 L/m		MAX 32°C
	TEMPERATURE OF COOLING WATER		
OPERATING TORQUE OF SHIFTING LEVER			UNDER 2.94Nm



- REMARK (HOT)
- 1.HOUSING: SAE#1
 - 2.DRIVING RING: SAE 14"
 - 3.COUPLING TYPE
-CENTA Flex Coupling : 77216801
-DUMMY(for HOUSING) : 180932
 - 4.APPLICATION ENGINE : STANDARD



BRACKET DIMENSION



공용 공차 TOLERANCE ON					번호 NO.		품번 PART NO.		품명 PART NAME		개수 Q'TY	재질 MATERIAL	규격 SIZE	비고 REMARKS	
분수 FRACTIONS		소수 DECIMALS		각도 ANGLES	재질 MATERIAL					형식 TYPE	DMT180HL		원도 번호 ORIGINAL DWG. NO.		
±		±		±		작성 DATE 2018.06.29		척도 SCALE N/S		품명 NAME	MARINE TRANSMISSION				
구분		조급		중급		정급		승인 APPROVED BY	검도 CHECKED BY	제도 DRAWN	설계 DESIGNED	도번 DWG. NO.	18000GHA~B-114CFRH		개칭 (REV.) 000
1 초과 4 이하		± 0.3		± 0.1		± 0.05		JK.Kim	TH.Cha	GH.Park					
4 16		± 0.5		± 0.2		± 0.07									
16 63		± 0.7		± 0.3		± 0.1									
63 250		± 1.2		± 0.5		± 0.2									
250 1000		± 2.0		± 0.8		± 0.3									
										크기 SIZE	A 3	코드 번호 CODE ID. NO.			