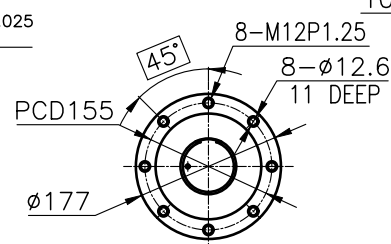
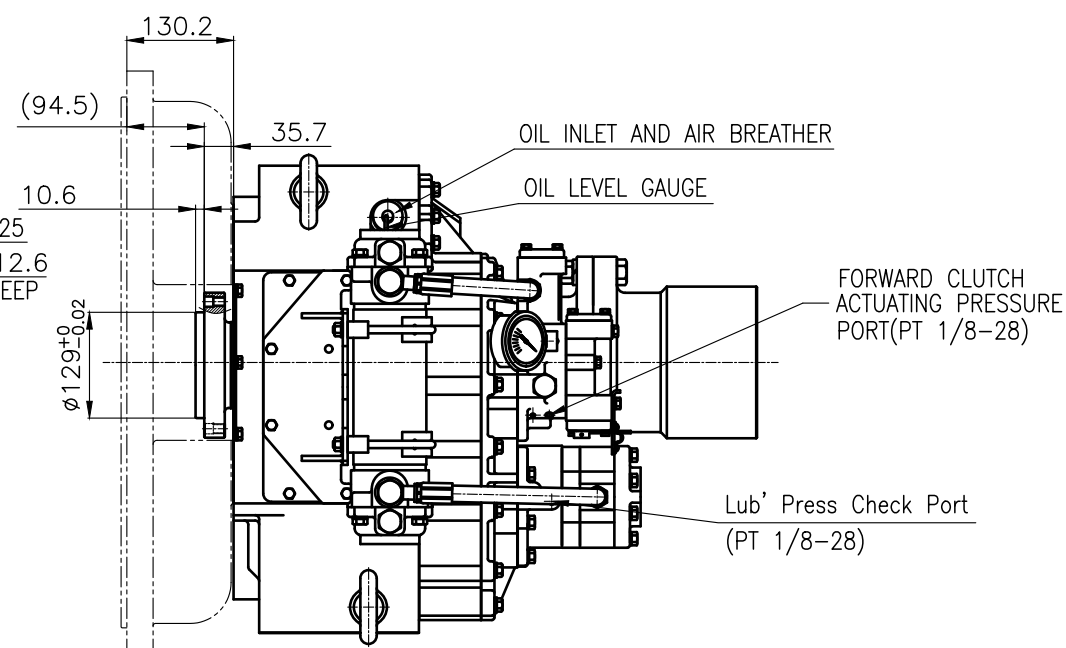


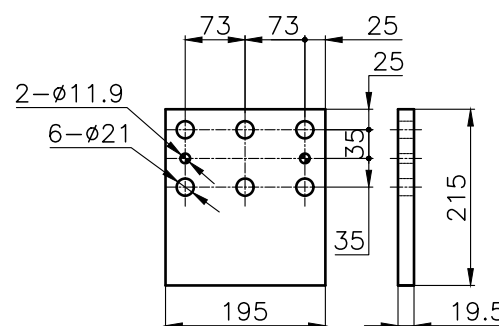
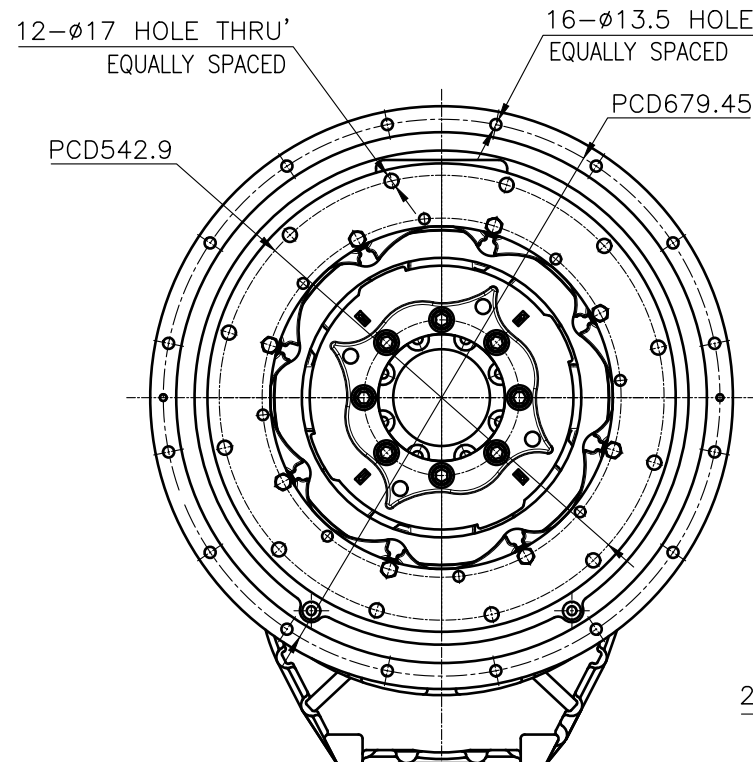
### OUTPUT SHAFT COUPLING & PROPELLER COUPLING DIMENSION



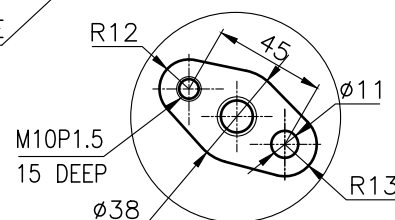
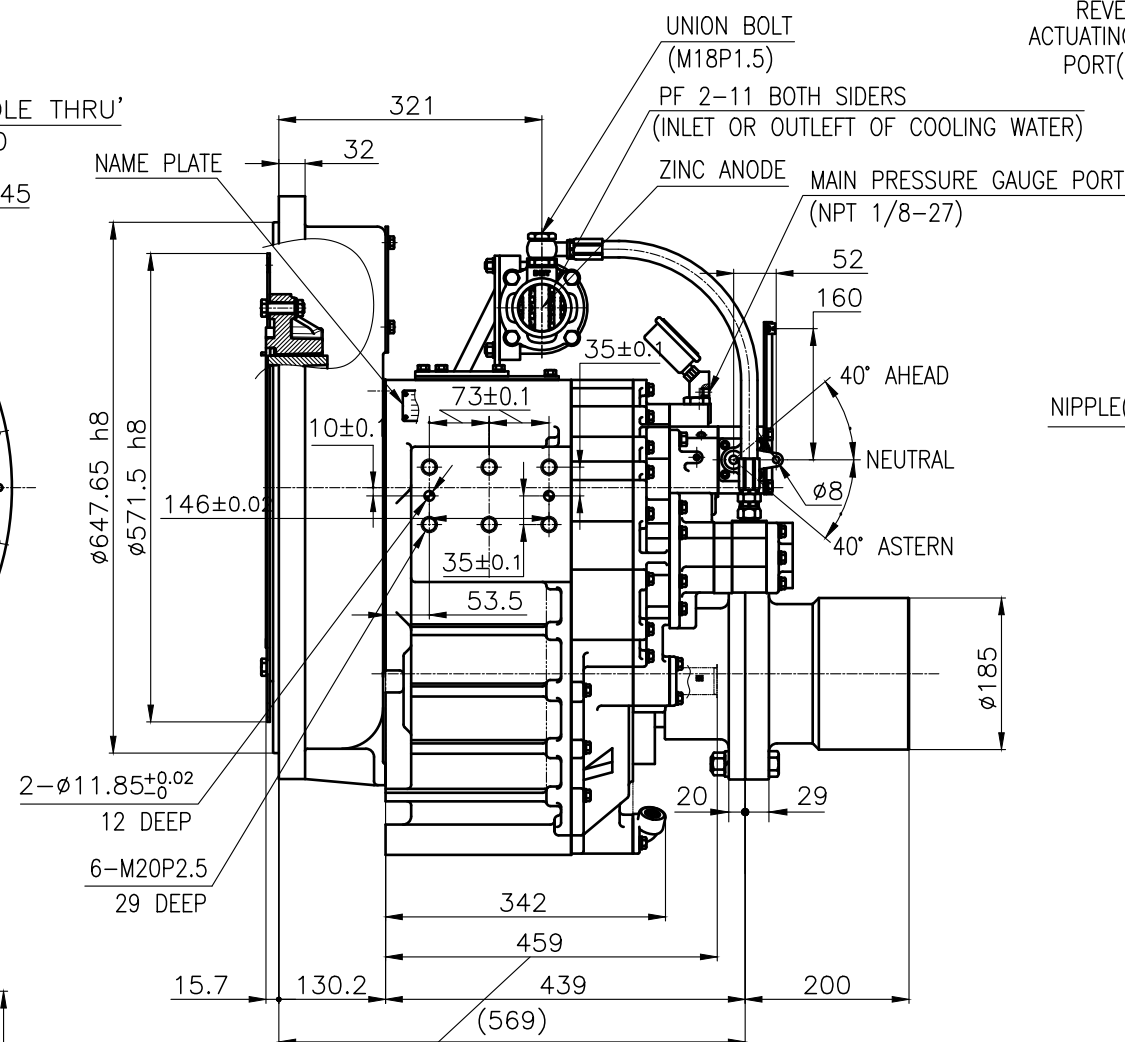
## INPUT COUPLING DIMENSION



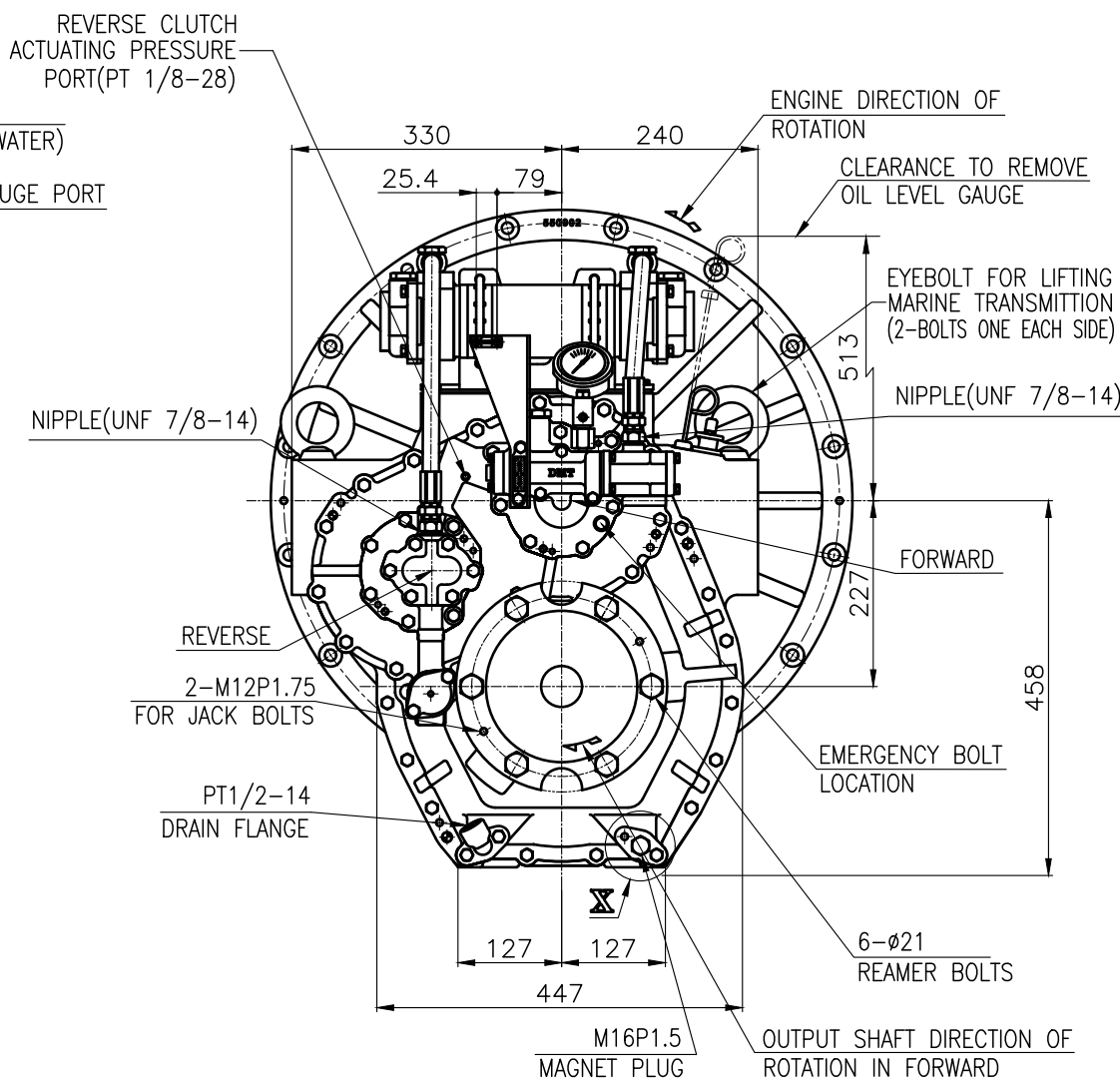
DMT240H MARINE TRANSMISSION SPECIFICATION			
GEAR RATIO	1.50 , 1.97 , 2.44 , 2.93 , 3.40		
TOTAL WEIGHT	APPROX. 400 Kg(DRY)		
OIL CAPACITY	APPROX. 8L		
OIL VISCOSITY	SAE # 30		
OIL PRESSURE	1.96 ~ 2.54 MPa	CLUTCH OIL	
DIRECTION OF ROTATION IN FORWARD	INPUT	C.C.W VIEWED FROM THE STERN	
	OUTPUT	C.W VIEWED FROM THE STERN	
OIL CHANGE INTERVAL	THE FIRST 100HOURS OF INITIAL OPERATION		
	AND EVERY 1000HOURS THEREAFTER		
SHIFTING LIMIT	UNDER 50% OF THE RATED ENGINE SPEED		
OIL COOLER	WATER FLOW 40 ~ 60 L/m		
	TEMPERATURE OF COOLING WATER	MAX 32°C	
OPERATING TORQUE OF SHIFTING LEVER		UNDER 2.94Nm	



BRACKET DIMENSION



"X" detail(3/1)




REMARK

1.HOUSING: SAE#0

2.DRIVING RING: SAE 18"

3.COUPLING TYPE

CENTA Flex Coupling (77268802)

허용 공차 TOLERANCE ON					번호 NO.		품번 PART NO.		품명 PART NAME		개수 Q'TY		재질 MATERIAL		규격 SIZE		비고 REMARKS			
분수 FRACTIONS    소수 DECIMALS    각도 ANGLES					재질 MATERIAL		작성 DATE 2018.06.29		척도 SCALE 1/1		형식 TYPE		DMT240H		원도 번호 ORIGINAL DWG. NO.					
±    ±    ±							승인 APPROVED BY JK.Kim		검토도 CHECKED BY TH.Cha		제도 DRAWN CH.Baek		설계 DESIGNED		품명 NAME		MARINE TRANSMISSION			
일 절삭가공 구경    조급    종급    장공 1 호과 4 이하 ± 0.3 ± 0.1 ± 0.05 4    16 ± 0.5 ± 0.2 ± 0.07 16    63 ± 0.7 ± 0.3 ± 0.1 63    250 ± 1.2 ± 0.5 ± 0.2 250    1000 ± 2.0 ± 0.8 ± 0.3					도번 DWG. NO.		24000GA~E-018CFR		개정(REV) 000											
					크기 SIZE		A 3		코드 번호 CODE ID. NO.											
					D-I INDUSTRIAL															