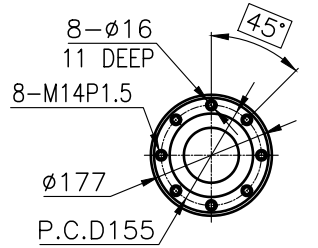
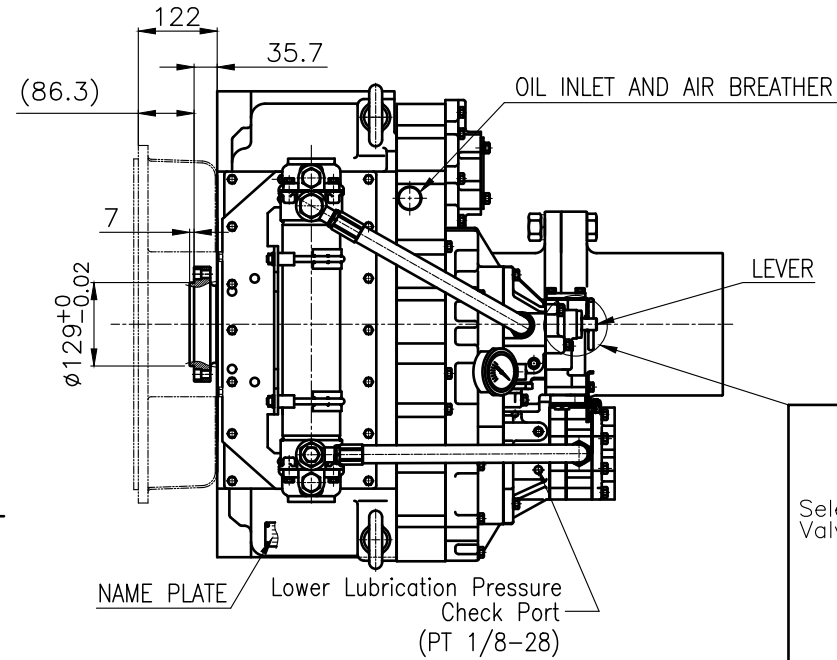


OUTPUT SHAFT COUPLING &
PROPELLER COUPLING DIMENSION

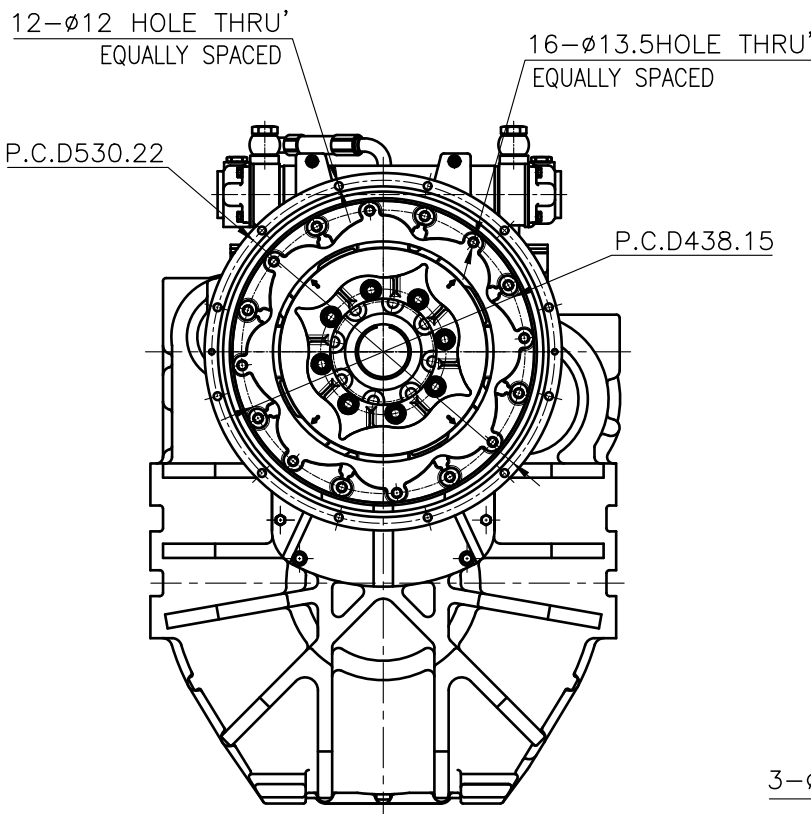


INPUT COUPLING
DIMENSION

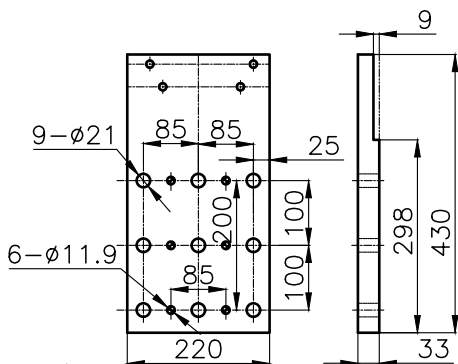


[BY PASS SYSTEM]

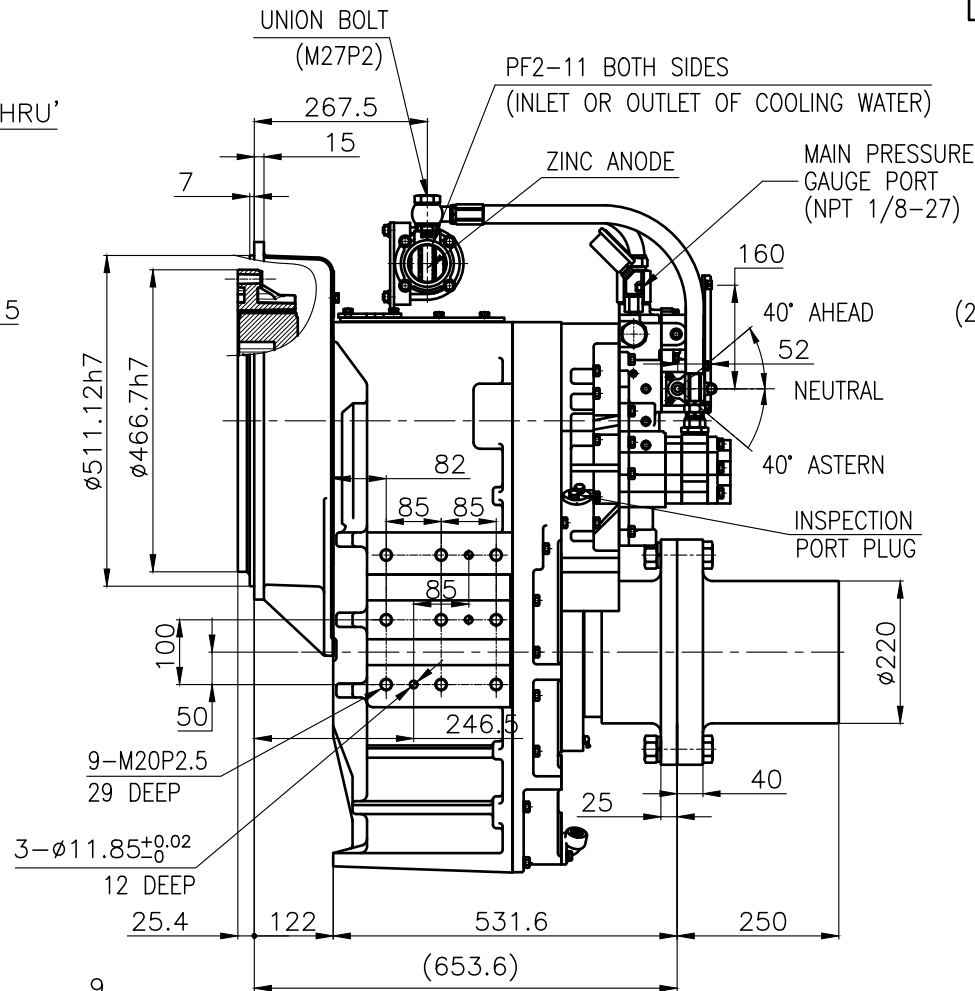
DMT460HL MARINE TRSANMISSION SPECIFICATION			
GEAR RATIO	3.02, 3.28, 3.56, 4.07, 4.48, 4.95		
TOTAL WEIGHT	APPROX. 962 Kg(DRY)		
OIL CAPACITY	APPROX. 18 L		
OIL VISCOSITY	SAE # 30		
OIL PRESSURE	1.96 ~ 2.54 MPa	CLUTCH OIL	
DIRECTION OF ROTATION IN FORWARD	INPUT	C.C.W VIEWED FROM THE STERN	
	OUTPUT	C.W VIEWED FROM THE STERN	
OIL CHANGE INTERVAL	THE FIRST 100HOURS OF INITIAL OPERATION		
	AND EVERY 1000HOURS THEREAFTER		
SHIFTING LIMIT	UNDER 50% OF THE RATED ENGINE SPEED		
OIL COOLER	WATER FLOW 90 ~ 120 L/min		
	TEMPERATURE OF COOLING WATER		MAX 32℃
OPERATING TORQUE OF SHIFTING LEVER		UNDER 2.94Nm	



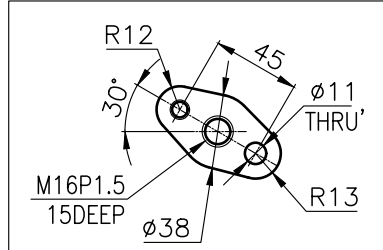
REMARK
1.HOUSING : SAE# 1
2.DRIVING RING : SAE 14"
3.COUPLING TYPE
CENTA Flex Coupling (77318801)




BRACKET DIMENSION



"X" DETAIL(3/1)



공통공차 TOLERANCE ON				번호 NO.		품 PART NO.		품 PART NAME		개 수 Q'TY	재 MATERIAL	구 SIZE	비 고 REMARKS		
분 수 FRACTIONS		소 수 DECIMALS		각 도 ANGLES		재 MATERIAL				형 식 TYPE		원 도 번 ORIGINAL DWG. NO.			
± —		± —		± —						도 MT SCALE		N/S			
1 초과 4 이하		± 0.3		± 0.1		± 0.05		승 인 APPROVED BY		검 도 CHECKED BY		제 도 DRAWN		설 계 DESIGNED	
4		± 0.5		± 0.2		± 0.07		JK.Kim		TH.Cha		CH.Baek		도 DWG. NO.	
16		± 0.7		± 0.3		± 0.1		JK.Kim		TH.Cha		CH.Baek		46000GHA~F-114CFR	
63		± 1.2		± 0.5		± 0.2		JK.Kim		TH.Cha		CH.Baek		개정(REV.) 000	
250		± 2.0		± 0.8		± 0.3		JK.Kim		TH.Cha		CH.Baek		도 DWG. NO.	
250		± 2.0		± 0.8		± 0.3		JK.Kim		TH.Cha		CH.Baek		도 DWG. NO.	
250		± 2.0		± 0.8		± 0.3		JK.Kim		TH.Cha		CH.Baek		도 DWG. NO.	
250		± 2.0		± 0.8		± 0.3		JK.Kim		TH.Cha		CH.Baek		도 DWG. NO.	
250		± 2.0		± 0.8		± 0.3		JK.Kim		TH.Cha		CH.Baek		도 DWG. NO.	
250		± 2.0		± 0.8		± 0.3		JK.Kim		TH.Cha		CH.Baek		도 DWG. NO.	
250		± 2.0		± 0.8		± 0.3		JK.Kim		TH.Cha		CH.Baek		도 DWG. NO.	
250		± 2.0		± 0.8		± 0.3		JK.Kim		TH.Cha		CH.Baek		도 DWG. NO.	
250		± 2.0		± 0.8		± 0.3		JK.Kim		TH.Cha		CH.Baek		도 DWG. NO.	
250		± 2.0		± 0.8		± 0.3		JK.Kim		TH.Cha		CH.Baek		도 DWG. NO.	
250		± 2.0		± 0.8		± 0.3		JK.Kim		TH.Cha		CH.Baek		도 DWG. NO.	
250		± 2.0		± 0.8		± 0.3		JK.Kim		TH.Cha		CH.Baek		도 DWG. NO.	
250		± 2.0		± 0.8		± 0.3		JK.Kim		TH.Cha		CH.Baek		도 DWG. NO.	
250		± 2.0		± 0.8		± 0.3		JK.Kim		TH.Cha		CH.Baek		도 DWG. NO.	
250		± 2.0		± 0.8		± 0.3		JK.Kim		TH.Cha		CH.Baek		도 DWG. NO.	
250		± 2.0		± 0.8		± 0.3		JK.Kim		TH.Cha		CH.Baek		도 DWG. NO.	
250		± 2.0		± 0.8		± 0.3		JK.Kim		TH.Cha		CH.Baek		도 DWG. NO.	
250		± 2.0		± 0.8		± 0.3		JK.Kim		TH.Cha		CH.Baek		도 DWG. NO.	
250		± 2.0		± 0.8		± 0.3		JK.Kim		TH.Cha		CH.Baek		도 DWG. NO.	
250		± 2.0		± 0.8		± 0.3		JK.Kim		TH.Cha		CH.Baek		도 DWG. NO.	
250		± 2.0		± 0.8		± 0.3		JK.Kim		TH.Cha		CH.Baek		도 DWG. NO.	
250		± 2.0		± 0.8		± 0.3		JK.Kim		TH.Cha		CH.Baek		도 DWG. NO.	
250		± 2.0		± 0.8		± 0.3		JK.Kim		TH.Cha		CH.Baek		도 DWG. NO.	
250		± 2.0		± 0.8		± 0.3		JK.Kim		TH.Cha		CH.Baek		도 DWG. NO.	
250		± 2.0		± 0.8		± 0.3		JK.Kim		TH.Cha		CH.Baek		도 DWG. NO.	
250		± 2.0		± 0.8		± 0.3		JK.Kim		TH.Cha		CH.Baek		도 DWG. NO.	
250		± 2.0		± 0.8		± 0.3		JK.Kim		TH.Cha		CH.Baek		도 DWG. NO.	
250		± 2.0		± 0.8		± 0.3		JK.Kim		TH.Cha		CH.Baek		도 DWG. NO.	
250		± 2.0		± 0.8		± 0.3		JK.Kim		TH.Cha		CH.Baek		도 DWG. NO.	
250		± 2.0		± 0.8		± 0.3		JK.Kim		TH.Cha		CH.Baek		도 DWG. NO.	
250		± 2.0		± 0.8		± 0.3		JK.Kim		TH.Cha		CH.Baek		도 DWG. NO.	
250		± 2.0		± 0.8		± 0.3		JK.Kim		TH.Cha		CH.Baek		도 DWG. NO.	
250		± 2.0		± 0.8		± 0.3		JK.Kim		TH.Cha		CH.Baek		도 DWG. NO.	
250		± 2.0		± 0.8		± 0.3		JK.Kim		TH.Cha		CH.Baek		도 DWG. NO.	
250		± 2.0		± 0.8		± 0.3		JK.Kim		TH.Cha		CH.Baek		도 DWG. NO.	
250		± 2.0		± 0.8		± 0.3		JK.Kim		TH.Cha		CH.Baek		도 DWG. NO.	
250		± 2.0		± 0.8		± 0.3		JK.Kim		TH.Cha		CH.Baek		도 DWG. NO.	
250		± 2.0		± 0.8		± 0.3		JK.Kim		TH.Cha		CH.Baek		도 DWG. NO.	
250		± 2.0		± 0.8		± 0.3		JK.Kim		TH.Cha		CH.Baek		도 DWG. NO.	
250		± 2.0		± 0.8		± 0.3		JK.Kim		TH.Cha		CH.Baek		도 DWG. NO.	
250		± 2.0		± 0.8		± 0.3		JK.Kim		TH.Cha		CH.Baek		도 DWG. NO.	
250		± 2.0		± 0.8		± 0.3		JK.Kim		TH.Cha		CH.Baek		도 DWG. NO.	
250		± 2.0		± 0.8		± 0.3		JK.Kim		TH.Cha		CH.Baek		도 DWG. NO.	
250		± 2.0		± 0.8		± 0.3		JK.Kim		TH.Cha		CH.Baek		도 DWG. NO.	
250		± 2.0		± 0.8		± 0.3		JK.Kim		TH.Cha		CH.Baek		도 DWG. NO.	
250		± 2.0		± 0.8		± 0.3		JK.Kim		TH.Cha		CH.Baek		도 DWG. NO.	
250		± 2.0		± 0.8		± 0.3		JK.Kim		TH.Cha		CH.Baek		도 DWG. NO.	
250		± 2.0		± 0.8		± 0.3		JK.Kim		TH.Cha		CH.Baek		도 DWG. NO.	
250		± 2.0		± 0.8		± 0.3		JK.Kim		TH.Cha		CH.Baek			