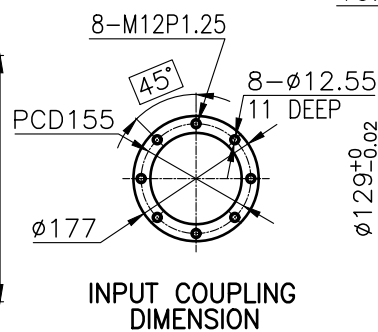
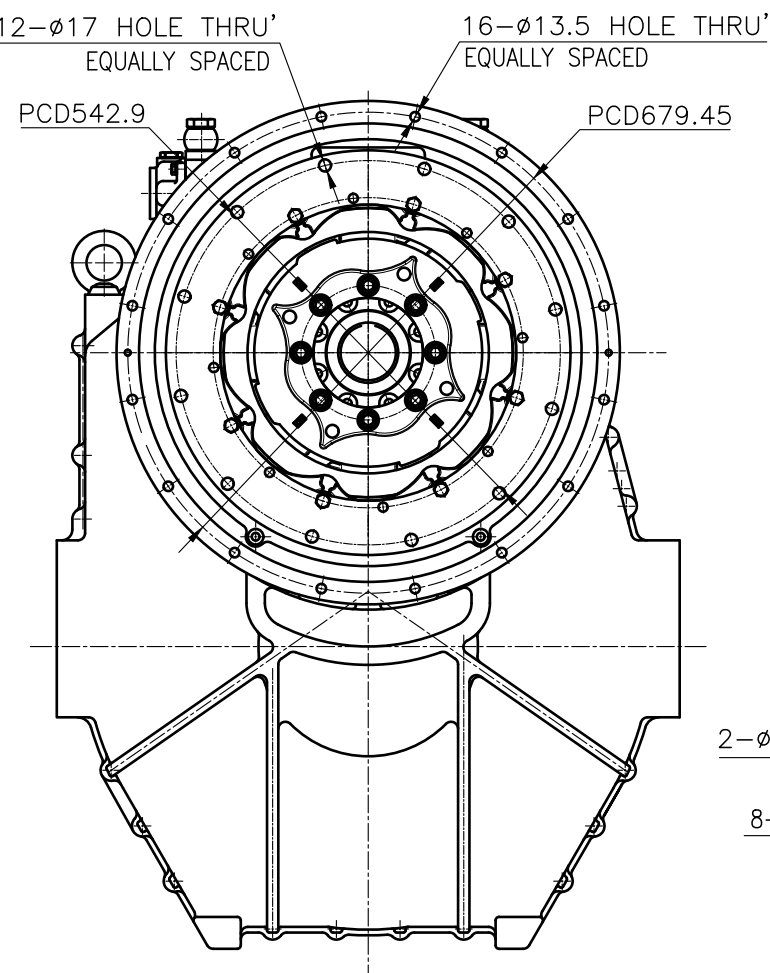
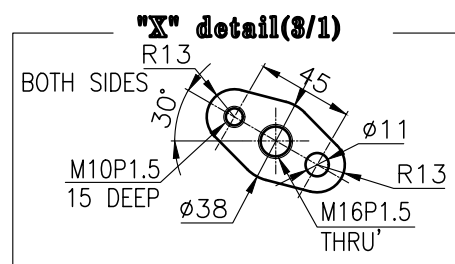
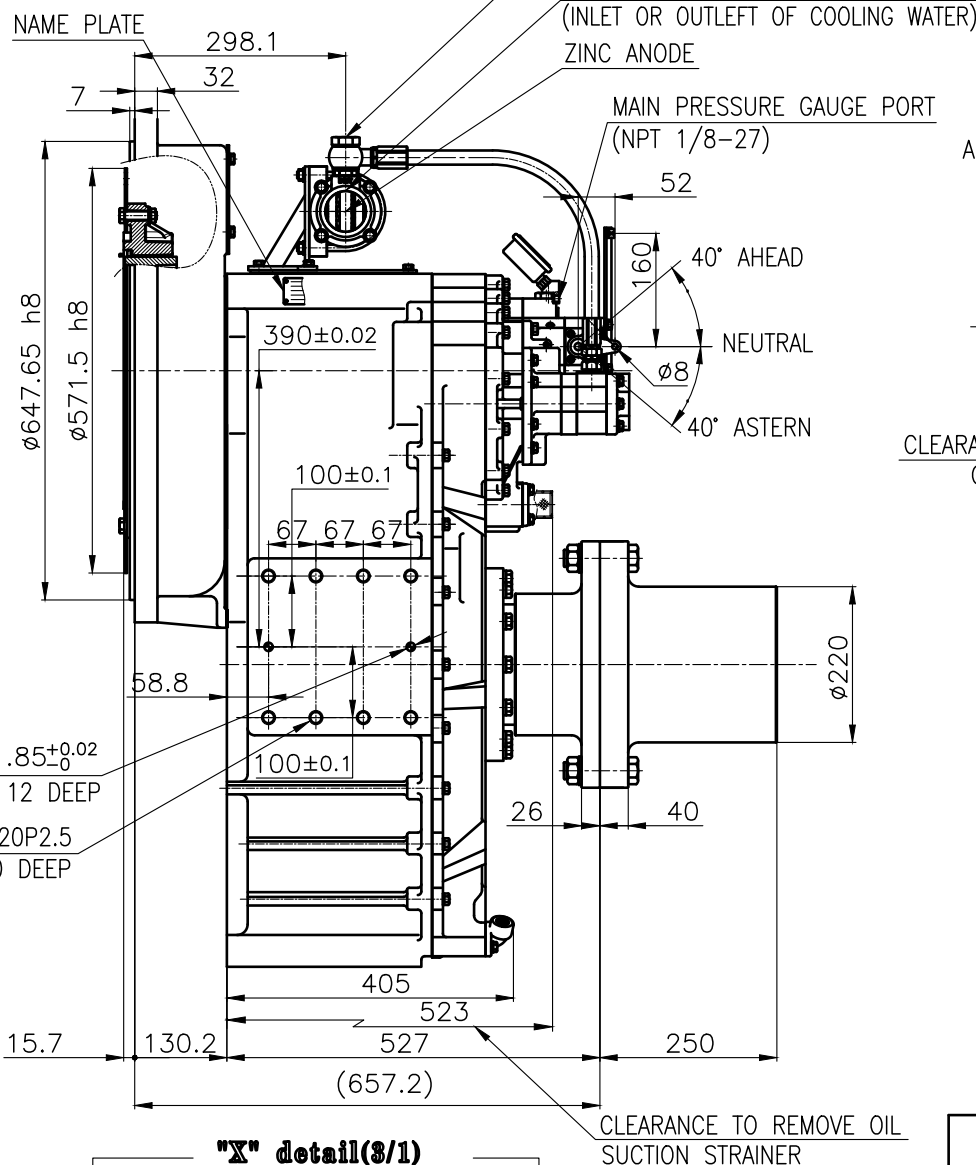
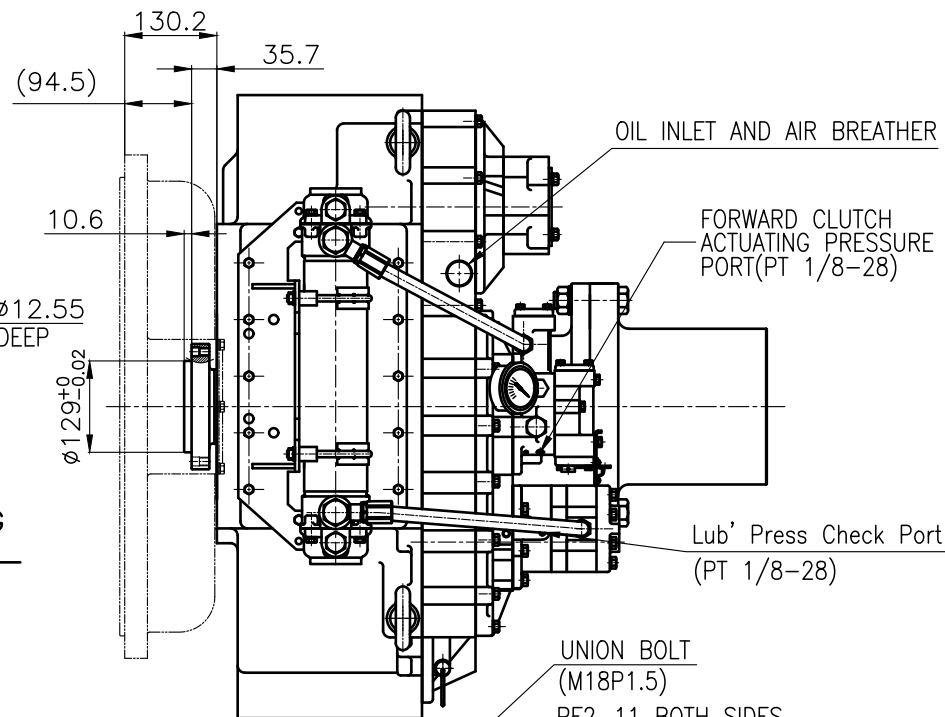


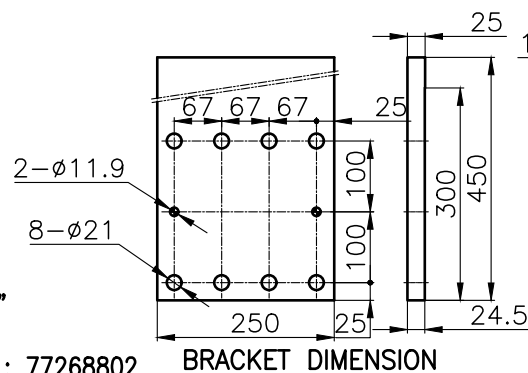
OUTPUT SHAFT COUPLING &  
PROPELLER COUPLING DIMENSION



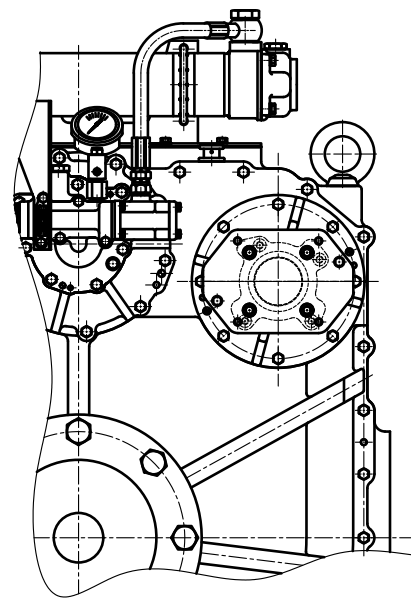
INPUT COUPLING  
DIMENSION



REMARK  
1. HOUSING: SAE#0  
2. DRIVING RING: SAE 18"  
3. COUPLING TYPE  
-CENTA Flex Coupling : 77268802

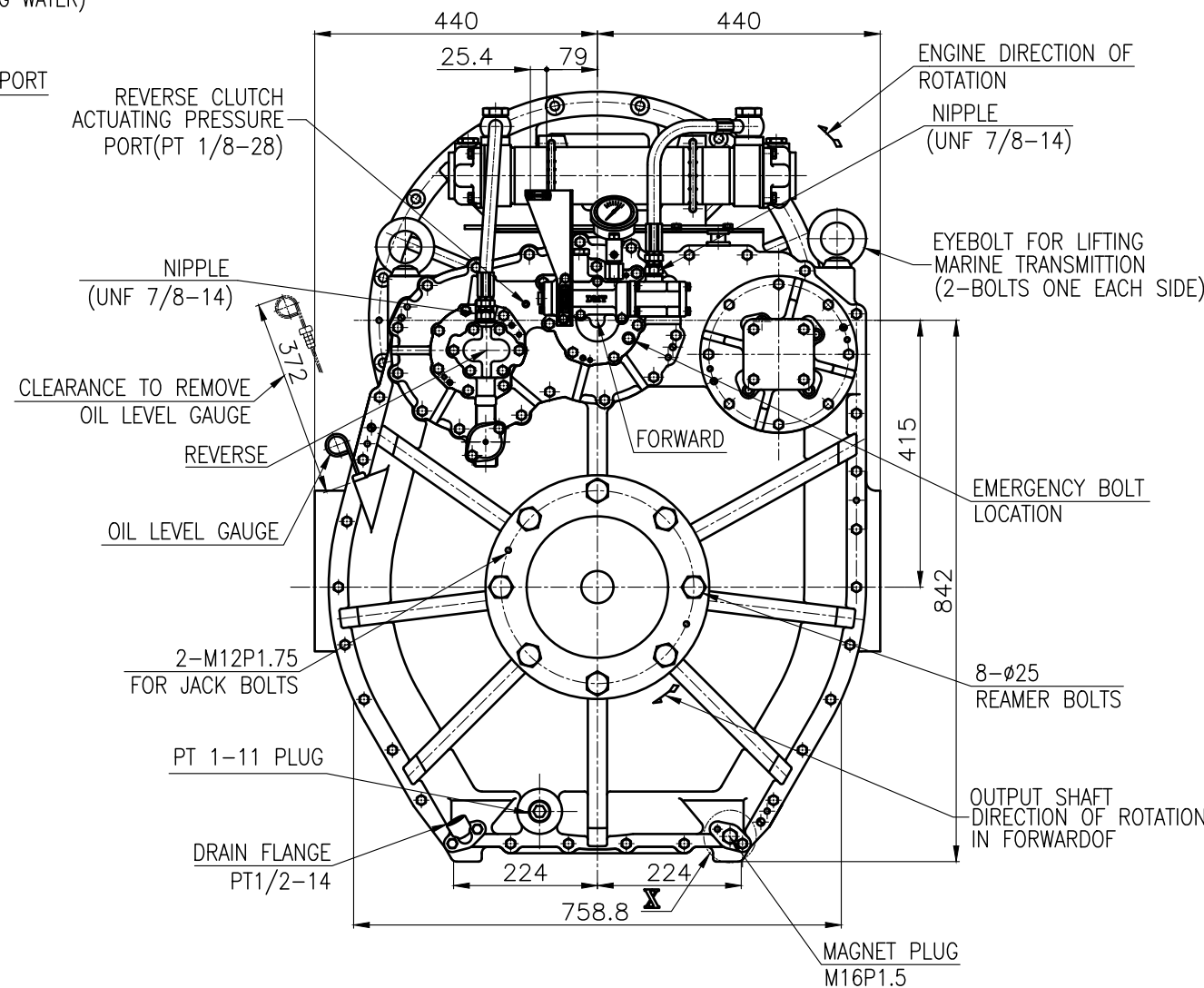


BRACKET DIMENSION



P.T.O ATTACHED

DMTP 6500 MARINE TRANSMISSION SPECIFICATION			
GEAR RATIO	5.11, 5.62, 5.91, 6.57, 6.95		
TOTAL WEIGHT	APPROX. 900 Kg(DRY)		
OIL CAPACITY	APPROX. 40 L		
OIL VISCOSITY	SAE # 30		
OIL PRESSURE	1.96 ~ 2.54 MPa		CLUTCH OIL
DIRECTION OF ROTATION IN FORWARD	INPUT	C.C.W VIEWED FROM THE STERN	
	OUTPUT	C.W VIEWED FROM THE STERN	
OIL CHANGE INTERVAL	THE FIRST 100HOURS OF INITIAL OPERATION		
	AND EVERY 1000HOURS THEREAFTER		
SHIFTING LIMIT	UNDER 50% OF THE RATED ENGINE SPEED		
OIL COOLER	WATER FLOW 40 ~ 60 L/m		
	TEMPERATURE OF COOLING WATER		MAX 32°
OPERATING TORQUE OF SHIFTING LEVER			UNDER 2.94Nm



TOLERANCE ON				PART NO.		PART NAME		Q'TY		MATERIAL		SIZE		REMARKS	
분수	소수	각도		NO.		NAME		Q'TY		MATERIAL		SIZE		REMARKS	
±	±	±													
1 초과 4 이하	± 0.3	± 0.1	± 0.05												
4 16	± 0.5	± 0.2	± 0.07												
16 63	± 0.7	± 0.3	± 0.1												
63 250	± 1.2	± 0.5	± 0.2												
250 1000	± 2.0	± 0.8	± 0.3												
D-I INDUSTRIAL				DATE		SCALE		TYPE		NAME		SIZE		REMARKS	
				2018.06.29		N/S		DMTP6500		MARINE TRANSMISSION		SIZE		REMARKS	
				APPROVED BY		CHECKED BY		DRAWN		DESIGNED		NAME		SIZE	
				JK.Kim		TH.Cha		CH.Baek				65000GA~E-018CFR		REVISION NO.	
				DWG. NO.								000			
				D-I INDUSTRIAL											
				SIZE		A 3									